




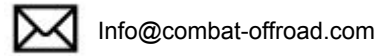
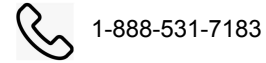
INSTALLATION INSTRUCTIONS: JEEP WRANGLER JT GLADIATOR BATTLE READY ALUMINUM INNER FENDER KIT, FRONT- DRAFT

 Parts List	
1	Pair Front Inner Fender Liners
1	Installation Hardware Bag
1	Installation Instructions


Difficulty Level : Medium

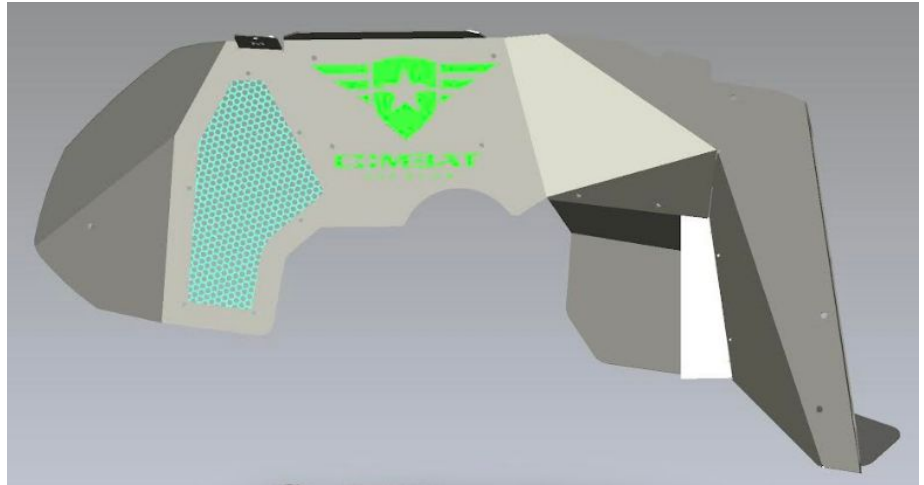


Product Support



PRODUCT IMAGE

 Tool List	
10 mm Wrench	4 mm Allen Key
8 mm Socket	Ratchet
Drill	1/4" Drill Bit
Trim Removal Tool	



NOTES AND MAINTENANCE

Before you begin installation, read all instructions thoroughly.

Proper tools will improve the quality of installation and reduce the time required.

For black finishes, mild soap may be used to clean the product.

Periodic inspections should be performed to ensure all mounting hardware remains tight.

Mild automotive detergent may be used to clean the product. Do not use dish detergent, abrasive cleaners, abrasive pads, wire brushes or other similar products that may damage the finish.

FEEDBACK

COMBAT OFF ROAD industry leading warranty. Register your purchase by visiting: www.combat-offroad.com/registration

Be social, tag us on your install or out on the trail enjoying, use: #combatoffroad

DISCLAIMER

Jeep®, Wrangler, Rubicon, and the Jeep grille design are registered trademarks of FCA (Fiat Chrysler Automobiles). Combat Off Road has no affiliation with FCA. The terms Jeep®, Wrangler, MOPAR®, & Rubicon are used for identification purposes only.



COMBAT
OFF ROAD®

STEP 1

Remove the existing inner fender liner

Using a suitable trim removal tool, pry out the 4 securing plastic pins at the locations shown at the circled area

Repeat for opposite side of vehicle



STEP 2

Remove the 3 retaining 8 mm bolts using a socket and ratchet at the locations shown at the arrows

Using the drill and 1/4" bit, drill out the center of the plastic rivets around the outside perimeter that joins the inner fender to the outer flare

Repeat for opposite side of vehicle



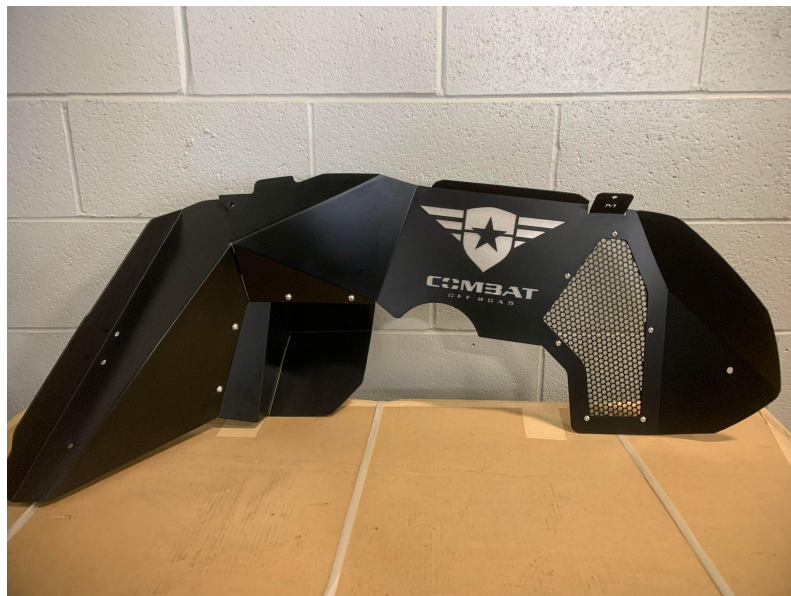


COMBAT
OFF ROAD®

STEP 3

Assemble the inner fender pieces together on a suitable work surface.

Use the supplied bolts, washers and nuts at each location and tighten with the 4 mm Allen key and 10 mm wrench.



Passenger Side Assembly



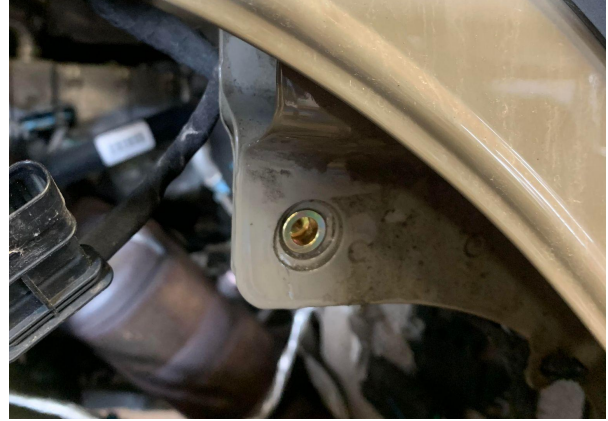
Driver Side Assembly

STEP 4

Install the riv-nuts in four locations, two per side, as shown



Install the riv nut at existing thru hole, on left and right side forward upper support bracket (Driver side shown)



Install the riv nut at existing thru hole, on left and right side upper rear location (Driver side shown)

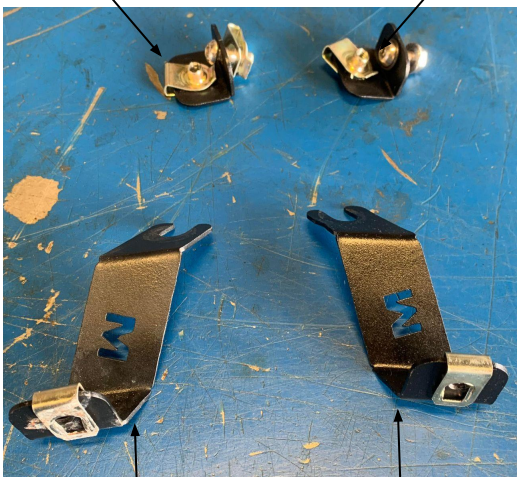
STEP 5

Install the speed clips onto the mounting brackets as shown.

Mount the rear brackets on left and right sides of the vehicle using the 4 mm allen bolts in two locations as shown, using the supplied speed clips.

Mount the front brackets by loosening the existing 10mm bolts securing the grill, slipping the bracket underneath, then tightening into place. NOTE offset of bracket goes in forward direction.

Driver Side Rear Passenger Side Rear



Driver Side Front Passenger Side Front

Passenger Side Rear



Passenger Side Front



STEP 4

Align the inner fender with the 4 mounting holes in the new locations previously installed.

Use the supplied bolts and washers at the 4 mounting locations, tighten with the 4 mm Allen key.

Repeat for opposite side.



Driver Side Completed